

# IS22-USB2.0

## 2MP USB2.0 Camera Module



### SPECIFICATION

Image Sensor	1/2.7" CMOS OV2710	1/2.7" CMOS OV2710
Pixel Size	3um(H) x 3um(V)	3um(H) x 3um(V)
Resolution	2.0 Megapixel 1920H x 1080V	2.0 Megapixel 1920H x 1080V
Output Format	MJPEG, YUV2	
FOV	90 degree	90 degree
Lens	EFL:3.0mm F/NO:3.0mm	EFL:3.0mm F/NO:3.0mm
Focus type	Fixed focus	
Shutter type	Electronic Rolling shutter	
Audio Input	No	
Protocol & Connection	Plug & Play, UVC compliant	
Output & Power Supply	USB2.0	
Power Socket	5P 1.25mm socket	
Supported OS	WinXP/Vista/Win7/Win8/Win10 MAC OSX El captain 10.11.4, Linux /Android, Wince with UVC	

Controllable Features	Brightness, Contrast, Saturation, Hue, Sharpness, Gamma, White balance, Backlight Contrast, Exposure
-----------------------	--

Cable length	Default 1m USB cable
--------------	----------------------

Module Size	56*36mm
-------------	---------

### WORKING CONDITION

Power Consumption	USB DC +5V Supply
-------------------	-------------------

Operating Temperature	-20° ~ +70°
-----------------------	-------------

Storage Temperature	-40° ~ +85°
---------------------	-------------

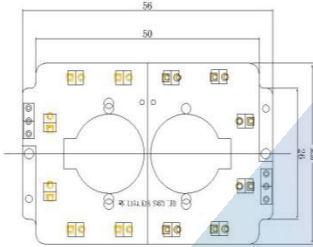
Humidity	80 ~85%
----------	---------

FORMAT	RESOLUTION	FRAME RATE	
		USB3.0	USB2.0
MJPEG	1920x1080 (1080P)		30fps
	1280X720 (720P)		30fps
	800x600 (WVGA)		30fps
	640X480 (VGA)		30fps
YUY2	1920x1080 (1080P)		5fps
	1280X720 (720P)		10fps
	800x600 (WVGA)		20fps
	640X480 (VGA)		30fps

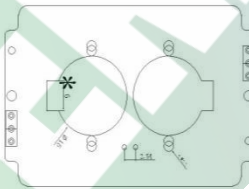
## PRODUCT DIMENSION

ROHS

TOP VIEW



LED

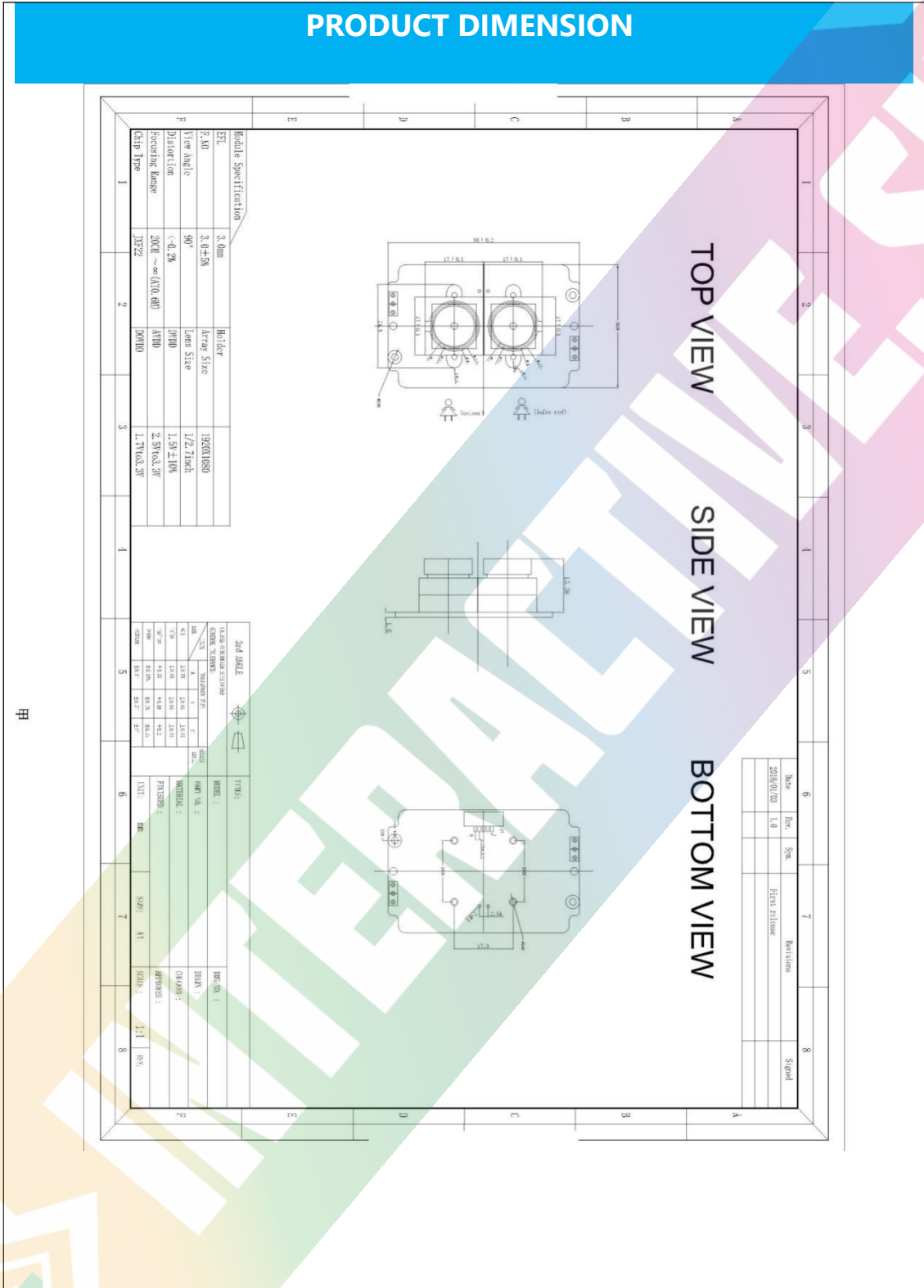


BOTTOM VIEW

Rev.	Change History	Originator	Date	APPROVED	CHECKED	DATE	UNIT	HEIGHT	Material
V.01							mm		

TITLE	CMOS Camera Module	SCALE	1:1	PROJ.	1
DRAWING		Rev.	V.01	QTY	1
CHECKED		SHEET	1 OF 1	SIZE	A4
APPROVED		Part Name			
		Customer- P/N			
		Material			

# PRODUCT DIMENSION



甲