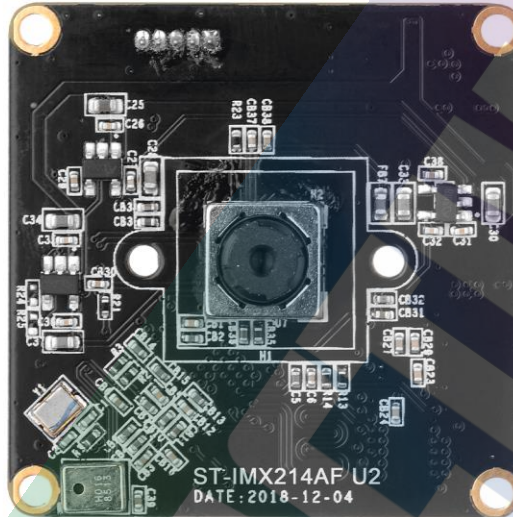


IS214AF-USB2.0



SPECIFICATION

Image Sensor	1/3.06" CMOS IMX214
Pixel Size	1.12um(H) x 1.12um(V)
Resolution	13 Megapixel 4192H x 3104V
Output Format	MJPEG, YUV2
FOV	77.9 degree
Lens	FEL: 3.79mm F/NO: 2.0mm
Focus type	Auto focus
Shutter type	Electronic Rolling shutter
Audio Input	Support Digital mic
Illumination	0.1 Lux
Chroma	Color
Output & Power Supply	USB2.0
Power Socket	5pin 1.25mm socket
Supported OS	Win XP/Vista/Win7/Win8/Win10

MAC OS X El Capitan 10.11.4, Linux/Android, Wince with UVC

Controllable Features

Brightness, Contrast, Saturation, Hue, Sharpness, Gamma,
White balance, Backlight Contrast, Exposure

Cable length Default 1m USB cable

Module Size 38*38 mm

WORKING CONDITION

Power Consumption USB DC +5V Supply

Operating Temperature -20° ~ +70°

Storage Temperature -40° ~ +85°

Humidity 80 ~85%

FORMAT	RESOLUTION	FRAME RATE	
		USB3.0	USB2.0
MJPEG	4192 x 3104 (13MP)		8fps
	3264 x 2448 (8MP)		10fps
	2592X1944 (5MP)		15fps
	2048*1536 (2K)		15fps
	1920x1080 (1080P)		30fps
	1280X720 (720P)		30fps
	800x600 (WVGA)		30fps
	640X480 (VGA)		30fps
YUY2	4192 x 3104 (13MP)		N/A
	3264 x 2448 (8MP)		N/A
	2592X1944 (5MP)		N/A
	1920x1080 (1080P)		N/A
	1280X720 (720P)		N/A
	640X480 (VGA)		N/A

